

# EclProfile CT+IP

Waterproofed high quality six colours LED ellipsoidal, Tunable White and colour mixing



The **EclProfile** CT+IP is a tunable white and full colour IP LED ellipsoidal designed for exterior applications such as touring, theme parks, cruise ships, and any outdoor events. It uses the same 6-colour LED source than its indoor version, but with a 30% higher lumen output, as it's equipped with a bigger power-supply and heat sink. The IP body of the fixtures takes any of the standard lenses and accessories of the **EclProfile** range. Its custom LED array and the powerful on-board colour control allows reaching bright and high-quality whites, up to 97 CRI, keeping a consistent colour output and ensuring a total control of the light. The wide feature set includes special theatrical functions such as tungsten emulation on dimming and colours, LEE colour presets, virtual CTO and studio functions, such as green and magenta tuning on white presets.



## MAIN FEATURES

- IP rated for exterior applications
- Rotating gobo IP65
- Linear white CCT from 2,800K to 10,000K, CRI up to 96
- Industry-standard colour gel matching, tungsten emulation on dimming, tint control (+/- green).

## VERSIONS

Code	Housing
ECLCTPLUSIPBK	Black
ECLCTPLUSIPWH	White

## TECHNICAL SPECIFICATION

### LIGHT SOURCE

- Source: 96x3 W 6 colour custom LEDs source (red, green, blue, royal blue, mint, pc amber)
- CCT: @full 5.000 K
- Luminous flux: (5°) 3'805 lm; (10°) 4'790 lm; (14°) 5'047 lm; (19°) 5'380 lm; (26°) 6'681 lm; (36°) 6'814 lm; (50°) 5'773 lm; (70°) 7'430 lm @full
- Luminous flux: (zoom 15°-30°) (min angle) 5'290 lm; (max angle) 6'664 lm - (zoom 25°-50°) (min angle) 7'042 lm; (max angle) 9'817 @full
- Lux: (5°) 14'638 lx; (10°) 8'663 lx; (14°) 3'812 lx; (19°) 2'530 lx; (26°) 1'759 lx; (36°) 810 lx; (50°) 474 lx; (70°) 306 lx @5 m full
- Lux: (zoom 15°-30°) (min angle) 3'502 lx; (max angle) 1'800 lx - (zoom 25°-50°) (min angle) 2'608 lx; (max angle) 974 lx @5 m full
- CRI: 93,7 @3.200 K; 97,6 @5.600 K
- R9: 98,6 @3.200 K; 98,2 @5.600 K
- TLCI: 95 @5.600 K
- TM30 Rf: 92 @5.600 K
- TM30 Rg: 100,1 @5.600 K
- Source life expectancy: > 50.000 h

### OPTICS

- Lens type: high-quality glass lens optics
- Additional optics: optional 5° / 10° / 14° / 19° / 26° / 36° / 50° / 70° / zoom 15°-30° / zoom 25°-50°
- Focus: manual
- Other: see available accessories

### COLOUR SYSTEM

- Colour mixing: RGB, Royal Blue, Mint, PC Amber
- CCT: CCT control, + / - green correction, tungsten emulation
- White presets: 2.800 K ~ 10.000 K
- Colour wheel: LEE filter emulation and RGB / HSI / CMY input mode selectable

### DYNAMIC EFFECTS

- Rotating gobos: 1 rotating gobo controlled on DMX
- Gobo size: B, outer: 86 mm - image: 64,5 mm - thickness: 1,1 mm
- Special features: 4 fan modes available and output management and linear crossfade channel from any white to any colour; virtual CTO on colours

### BODY

- Body: sturdy die-cast aluminium body
- Body colour: RAL 9004

### CONTROL

- Protocols: DMX512, RDM
- Stand Alone: selection of static colours, white presets, manual colours and built-in effects with adjustable speed
- DMX channels: UNO / DUO / Basic / Standard / Extended / RAW Direct / RAW 16bit / XY channel
- RDM: RDM for remote monitoring and settings
- Display: Graphic User Interface
- Firmware upgrade: yes, via USB - DMX interface (UPBOX2) not included (through dedicated software)
- Master/Slave: for synchronised operation of more units linked in a chain

### ELECTRONICS

- Dimmer: linear 0 ~ 100% electronic dimmer
- Dimmer curves: 4 selectable dimming modes available
- Strobe / shutter: 1 - 25 Hz, electronic
- Operating temperature: -20° ~ +45°
- LED Control: flicker free operation
- Selectable PWM: 600 ~ 25.000 Hz

### ELECTRICAL

- Mains power supply: 100-240V - 50/60Hz
- Max power consumption: 264 W
- Output (at 230V): 7 units on a single power line
- Power factor: > 0,95

### PHYSICAL

- IP rating: 65 for temporary outdoor application, not for fixed installation
- Cooling: low noise fan
- Suspension and fixing: bracket for hanging and positioning
- Signal connection: Amphenol XLR 5p IN/OUT connectors
- Power connection: Seetronic powerCON TRUE IP65 IN/OUT
- Dimensions (WxHxD): 324x540x660 mm
- Weight: 10 kg

### CERTIFICATIONS / APPROVALS

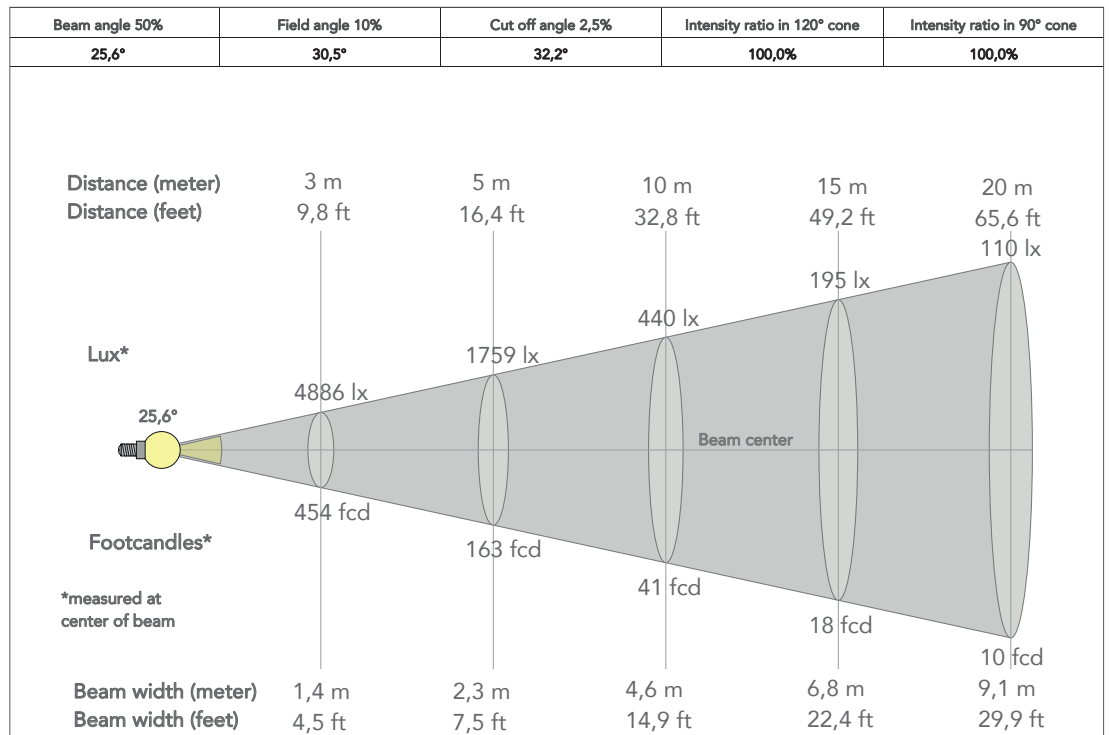
- Certifications / Approvals: CE, UKCA, RCM, cTUVus, FCC

## ACCESSORIES & RELATED PRODUCTS

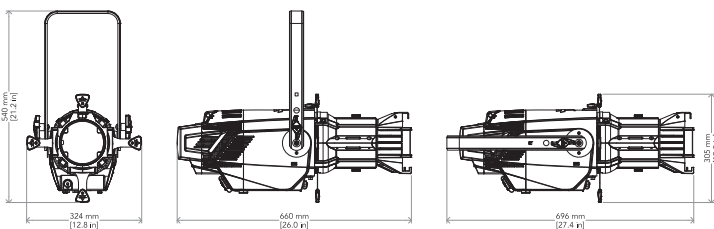
- 9313FXWL03 Ass. 3x2.5mm TH07 cable, 16A 3p 230V CEE plug, SETSAC3FX socket, L.3 m
- 9333FXWL03 Ass. 3x2.5mm TH07 cable, SHUKO plug, SETSAC3FX socket, L.3m
- 938225L03 3x2.5mm TH07 Cable, 16A SETSAC3MX, 16A SETSAC3FX, L. 3m
- C6002B Slim aluminum clamp, 200kg loading, 48-51mm tubes, M10 bolt, Black
- C6040B Aluminum clamp for 28mm spigot, 200kg load, 48-51mm tubes, black
- ECLLB05/10BK 5°/10° lens barrel for Ecl Profile fixtures, filterframe included, black housing
- ECLPRL05/10/14/19/26/36/50/70BK 5°/10°/14°/26°/36°/50°/70° PRL lens barrel for EclProfile fixtures, black housing
- ECLPRLZ1530/2550BK Zoom 15°-30°/25°-50° PRL lens barrel for EclProfile fixtures, black housing
- ECLPRTPG Gel filter frame for ECL Profile PRL lens barrel, comp. with 19°,26°,36° and 50°
- ECLPRGH Gobo holder for ECL Profile fixtures
- ECLPRIRIS Iris accessory for ECL Profile fixtures
- ECLPRSEF1 Soft edge filter and holder kit for ECL Profile fixtures
- C6040B Aluminum clamp for 28mm spigot, 200kg load, 48-51mm tubes, black
- IPTESTBOX Portable cacuum and pressure tester for ProLights IP fixtures
- UPBOX2P5 Firmware uploader kit, USB IN, 5-pin XLR DMX OUT

## PRESET FULL ON

Beam angle 50%: 26°



## TECHICAL DRAWINGS



## CERTIFICATIONS / APPROVALS



Conforms to UL STD. 1573  
Certified to CSA STD: C22.2 NO. 166

Visit our website  
for specifications and  
tech documentations

